

LYONS WIER GALLERY

175 Seventh Avenue, New York, NY 10011

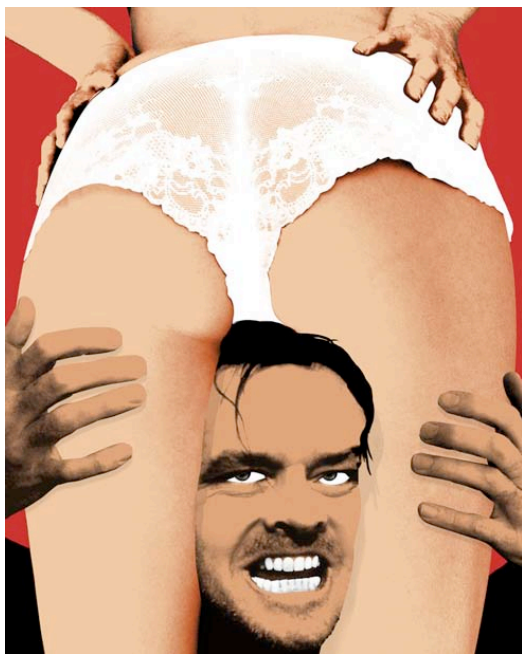
JOHN RITTER



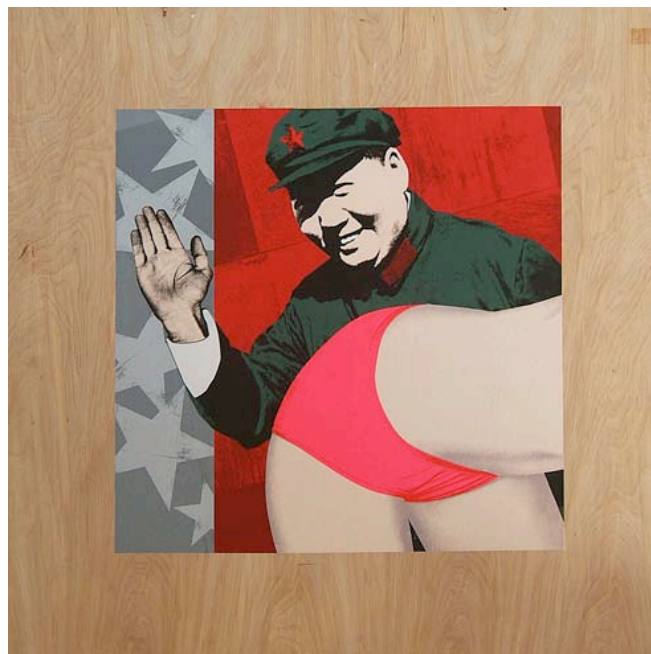
Bone Game, 2011
Enamel silkscreen on metal
54 x 72 in / 137.2 x 182.9 cm



Café Kim, 2011
Digital and acrylic on wood
46 x 30 in / 116.9 x 76.2 cm



Here's Johnny, 2011
Commercial light box
18 x 24 in / 45.7 x 60.9 cm



Mao, 2011
Silkscreen on wood
48 x 48 in / 121.9 x 121.9 cm

LYONS WIER GALLERY

175 Seventh Avenue, New York, NY 10011

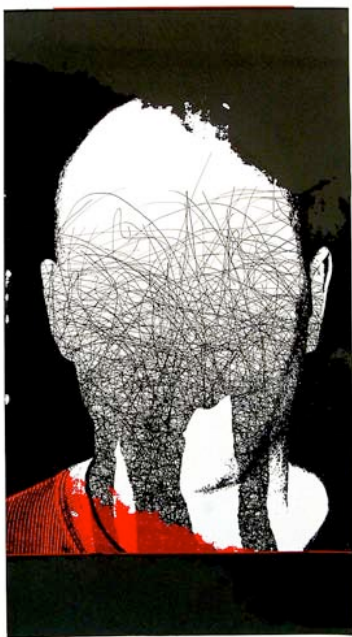
JOHN RITTER



Mistress' Daughter, 2011
Commercial light box
35 x 47 in / 88.9 x 119.4 cm



Rendition, 2011
Oil on canvas
48 x 28 in / 121.9 x 71.1 cm



Self Portrait, 2011
Silkscreen on paper
34 x 48 in / 86.4 x 121.9 cm



Sontag, 2011
Silkscreen on canvas
28 x 28 in / 71.1 x 71.1 cm

LYONS WIER GALLERY

175 Seventh Avenue, New York, NY 10011

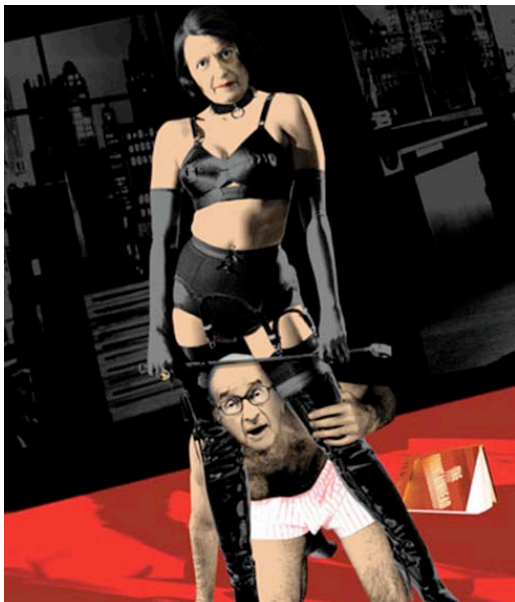
JOHN RITTER



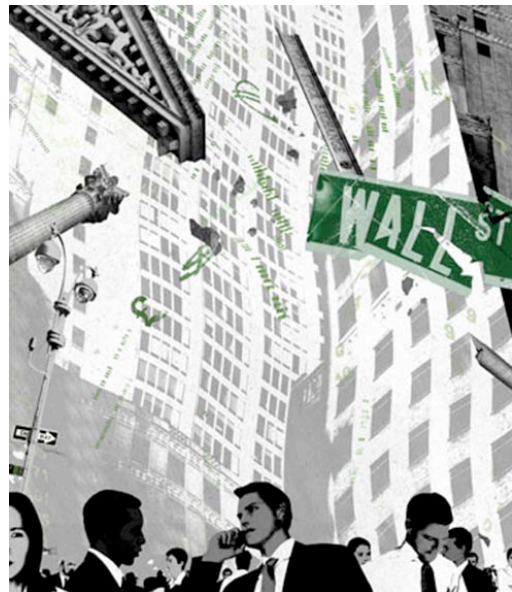
Meltdown, 2011, Giclée print
on Harman professional fine art media paper
12 x 14 in / 30.5 x 35.6 cm



Nuclear Mao, 2011, Giclée print
on Harman professional fine art media paper
12 x 14 in / 30.5 x 35.6 cm



Randspan, 2011, Giclée print
on Harman professional fine art media paper
12 x 14 in / 30.5 x 35.6 cm



Rational Ir-rationality, 2011, Giclée print
on Harman professional fine art media paper
12 x 14 in / 30.5 x 35.6 cm

JOHN RITTER



Soup, 2011, Giclée print
on Harman professional fine art media paper
12 x 14 in / 30.5 x 35.6 cm



China-Cassidy, 2011, Giclée print
on Harman professional fine art media paper
12 x 14 in / 30.5 x 35.6 cm



Castro, 2011, Giclée print
on Harman professional fine art media paper
12 x 14 in / 30.5 x 35.6 cm

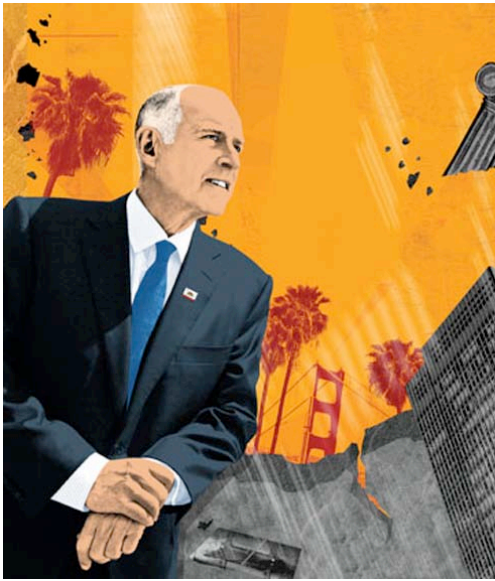


Commie Fish Bike, 2011, Giclée print
on Harman professional fine art media paper
12 x 14 in / 30.5 x 35.6 cm

LYONS WIER GALLERY

175 Seventh Avenue, New York, NY 10011

JOHN RITTER



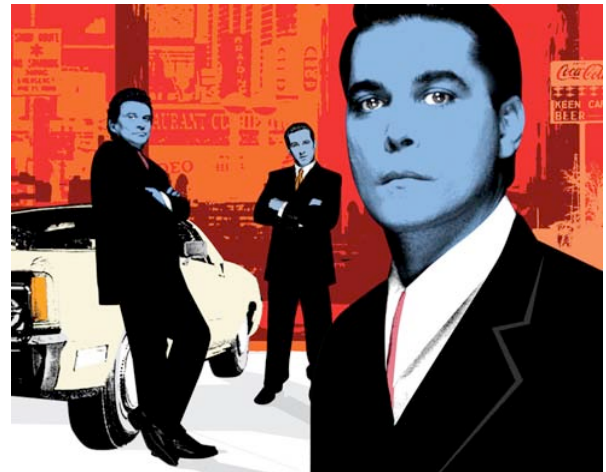
Jerry Brown, 2011, Giclée print
on Harman professional fine art media paper
12 x 14 in / 30.5 x 35.6 cm



Solitude, 2011, Giclée Print on Harman
professional fine art media paper
18 x 5.25 in / 45.7 x 13.3 cm



American Hardcore, 2011, Giclée print
on Harman professional fine art media paper
17 x 9.75 in / 43.2 x 24.8 cm



Goodfellas, 2011, Giclée print
on Harman professional fine art media paper
13.75 x 10.87 in / 30.5 x 35.6 cm

LYONS WIER GALLERY

175 Seventh Avenue, New York, NY 10011

JOHN RITTER



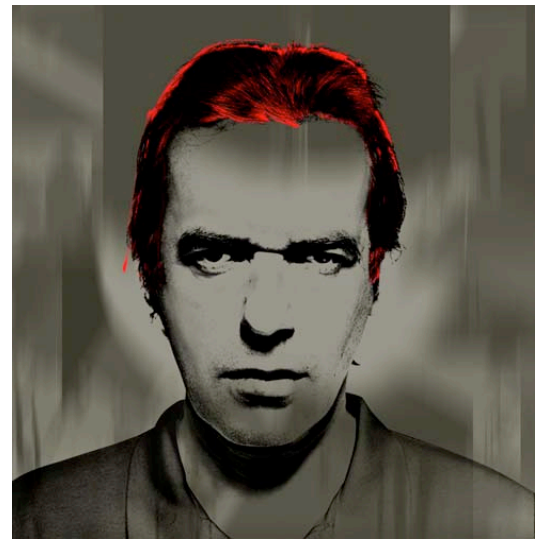
Godfather, 2011, Giclée print
on Harman professional fine art media paper
13.75 x 6.25 in / 34.9 x 15.9 cm



New Orleans, 2011, Giclée print
on Harman professional fine art media paper
19 x 6.25 in / 48.3 x 15.9 cm



Cowboys, 2011, Giclée print
on Harman professional fine art media paper
14.25 x 7.75 in / 36.2 x 19.7 cm



Martin Amis, 2011, Giclée print
on Harman professional fine art media paper
12 x 12.25 in / 30.5 x 31.1 cm

LYONS WIER GALLERY

175 Seventh Avenue, New York, NY 10011

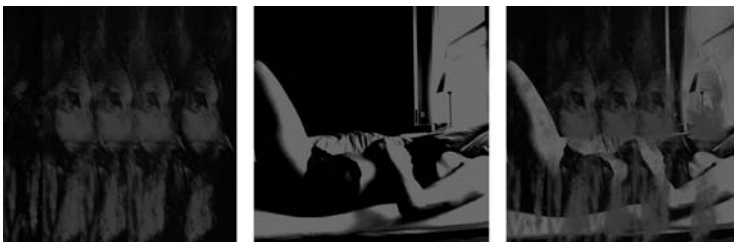
JOHN RITTER



Assination of Nixon, 2011, Giclée print
on Harman professional fine art media paper
13.75 x 9.5 in / 34.9 x 24.1 cm



NG, 2011, Giclée print
on Harman professional fine art media paper
12 x 12.25 in / 30.5 x 31.1 cm



Phaedrus Triptych, 2011, Giclée print
on Harman professional fine art media paper
72 x 24 inches / 182.88 x 60.96 cm



Death of Vinyl, 2011, Giclée print
on Harman professional fine art media paper
13 x 18.75 in / 33 x 47.6 cm

LYONS WIER GALLERY

175 Seventh Avenue, New York, NY 10011

JOHN RITTER



Dog Town, 2011, Giclée print
on Harman professional fine art media paper
13 x 13.25 in / 33 x 33.6 cm



Disaster Capitalism, 2011, Giclée print
on Harman professional fine art media paper
19 x 7 in / 48.3 x 17.8 cm



Chocolate City, 2011, Giclée print
on Harman professional fine art media paper
18 x 9.5 in / 30.5 x 35.6 cm



Arcade Fire, 2011, Giclée print
on Harman professional fine art media paper
16 x 11 in / 40.6 x 27.9 cm

LYONS WIER GALLERY

175 Seventh Avenue, New York, NY 10011

JOHN RITTER



Devastation, 2011, Giclée print
on Harman professional fine art media paper
21 x 30 in / 53.3 x 76.2 cm